

MINIMAL EFFORT INGEST

iPres November 2015

WHAT IS MINIMAL EFFORT INGEST?

A different approach to ingest and Quality Assurance (QA).

In OAIS detailed QA is part of ingest

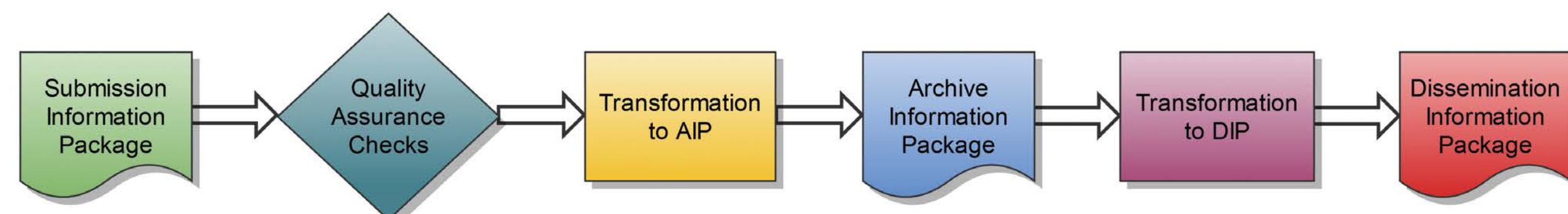
- Strict compliance required before ingest

Minimal Effort Ingest postpones most of QA

- Data ingested as is
- QA is done just after ingest - or even later, if resources are sparse
- Failure in QA is handled within the repository

More information

en.statsbiblioteket.dk/minimal-effort-ingest



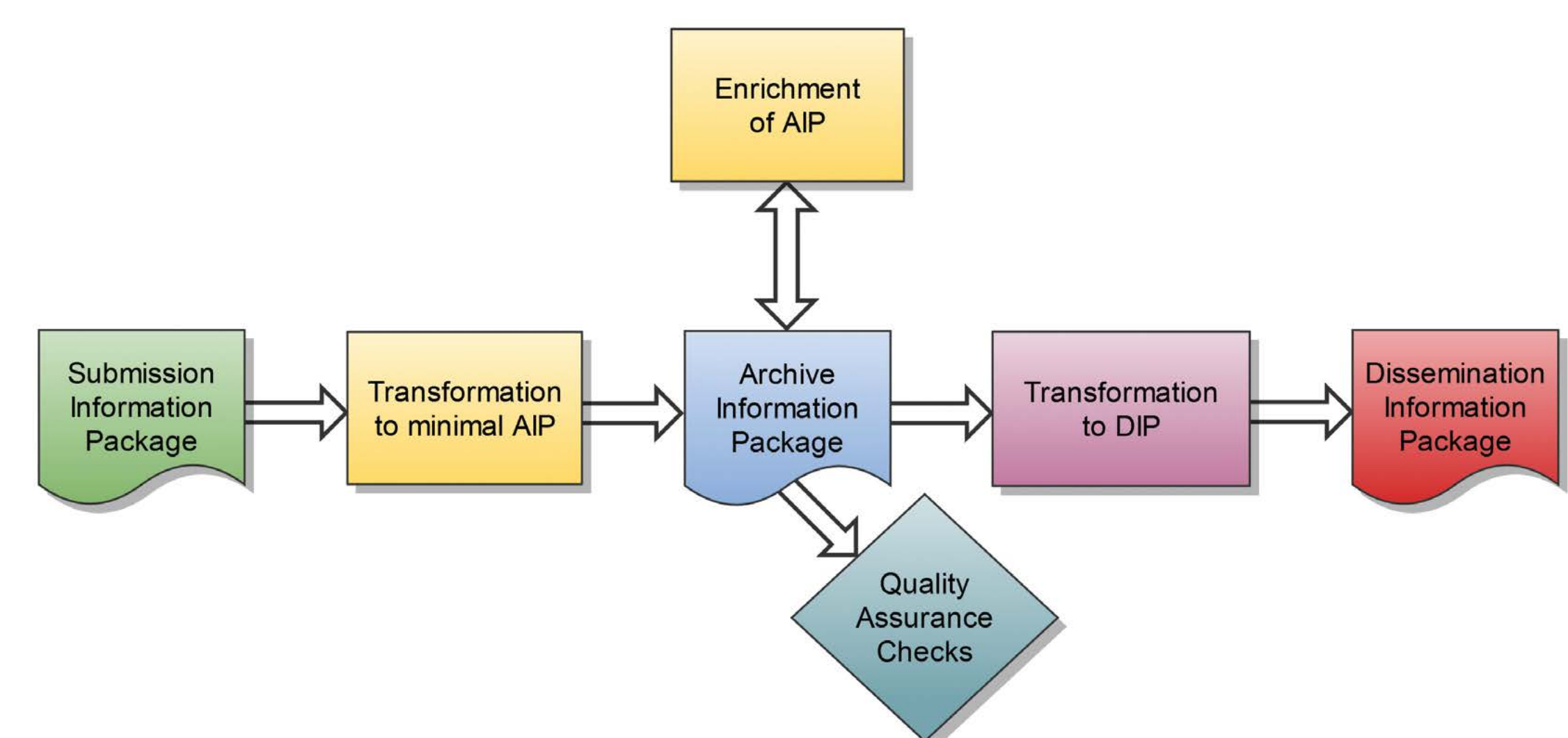
OAIS, Information Package Lifecycle

WHY DO MINIMAL EFFORT INGEST?

- Secure the incoming data quickly

- Old collections are preserved - even if resources for QA are not available

- Update and rerun preservation actions as needed



Minimum Effort Ingest, Information Package Lifecycle



MINIMAL EFFORT INGEST IN PRODUCTION

Newspaper Digitization Project

- About 30 million newspaper pages are being scanned
- We receive about 50,000 scanned pages per day

More information

en.statsbiblioteket.dk/newspaper-digitization

WILL MINIMAL EFFORT INGEST COMPROMISE PRESERVATION?

Claim: Repositories implementing Minimal Effort Ingest are *eventually consistent*, content- and preservation-wise, with the OAIS model.

FURTHER WORK

We have a number of old collections that are not yet preserved. Minimal Effort Ingest makes preservation of these feasible.

CONTACT DENMARK

Bolette Ammitzbøll Jurik
+45 8946 2322
baj@statsbiblioteket.dk

Asger Askov Blekinge
+45 8946 2100
abr@statsbiblioteket.dk

Kåre Fiedler Christiansen
+45 8946 2036
kfc@statsbiblioteket.dk

 **STATSBIBLIOTEKET**
STATE AND UNIVERSITY LIBRARY